

STEEPLE VIEW ESTATES

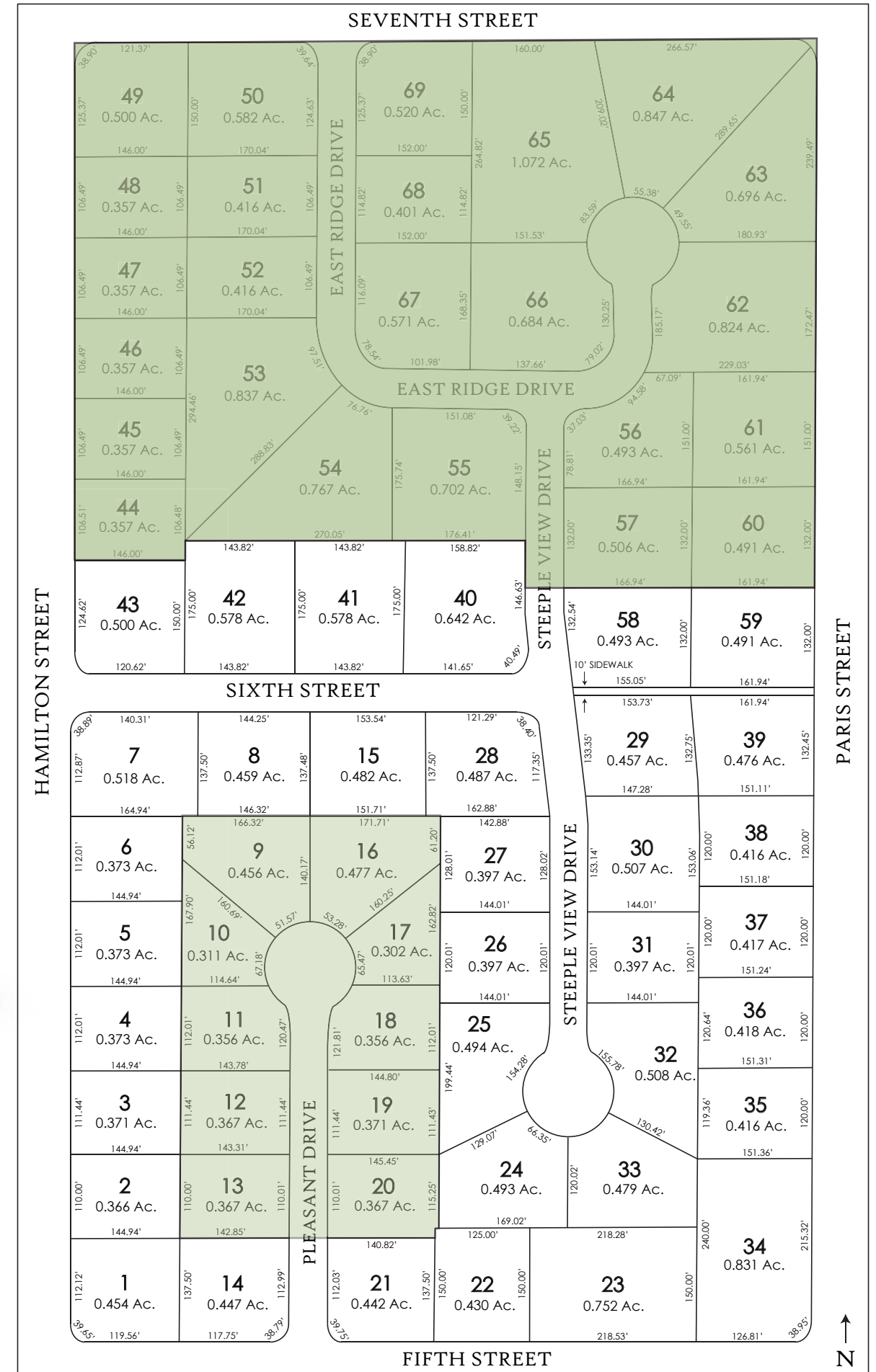
Beginning at the corner of Fifth and Hamilton Streets, Steeple View will extend northeast toward Paris and Seventh Streets. When complete, this collection of homes will encompass 30 total acres on the edge of the village of Minster.

Steeple View will be a collection of dwellings designed to naturally embrace the current landscape. The amenities of village living, combined with scenic countryside views, merge to create a special setting you can call home.



Join us as a new neighborhood on the edge of town comes to life.

- Phase 1
- Phase 2
- Phase 3



SINCE 1952
Trust in Experience
INDUSTRIAL • COMMERCIAL
RESIDENTIAL

285 South Ohio Street
Minster, Ohio 45865
O: 419.628.3364

baumerconstruction.com